

Contact

ContiTech North America
Veyance Technologies, Inc.
703 S. Cleveland Massillon Road
Fairlawn, OH 44333-3023 U.S.A.

U.S.A.

1-800-869-0435
FAX 1-800-228-3148

Canada

(French Only)
1-888-275-4397
FAX 1-888-464-4397

Mexico

(Within Mexico)
01-800-439-7373

(Outside Mexico)
+52-444-834-5803
FAX 01-800-062-0918

continental-elite.com



Legal Notice

The content of this publication is not legally binding and is provided as information only. The trademarks displayed in this publication are the property of Continental AG and/or its affiliates. Copyright © 2014 ContiTech AG. All rights reserved.



20781694

V-Ribbed Belt features mean longer life

Designed for long-lasting performance, our belts include the following features:

1. Tension Member

The load-carrying tension members are specially designed to provide top performance, length stability and shock load absorption on drives with locked centers or spring-loaded idlers.

2. Rubber Ribs

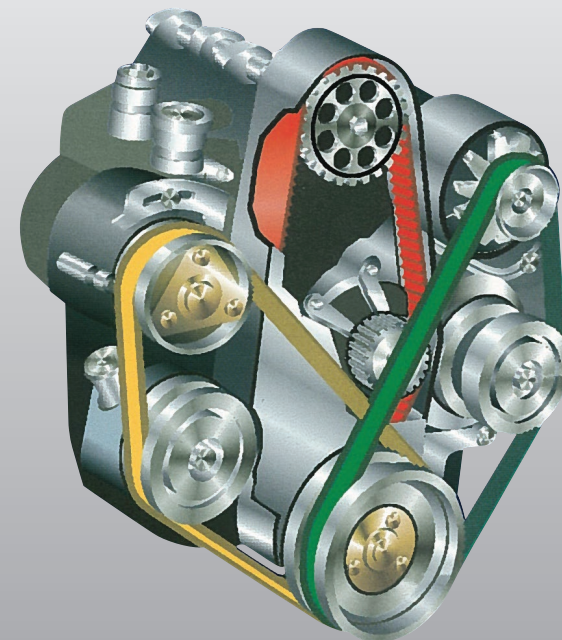
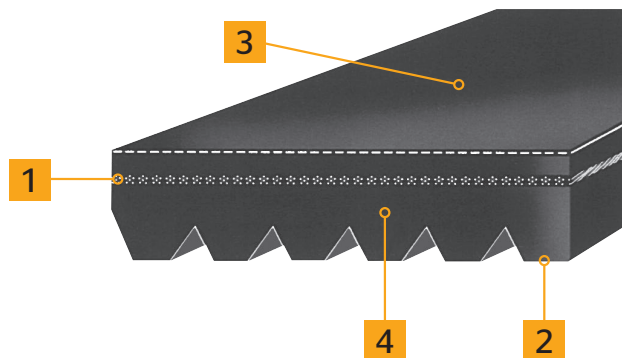
Long-wearing, fiber-loaded EPDM rubber is used in the ribs to provide support for the tension member and to transmit loads to the pulley. EPDM is the #1 OE manufacturer choice.

3. Backing Material

Bias-ply type fabric backing resists cracking and provides abrasion resistance.

4. Insulation Material

Oil- and heat-resistant rubber is used to bond the tension member to the rest of the belt.



Premium Automotive Aftermarket Products

It May Be Time to Replace
Your Drive Belts

Don't wait for trouble under the hood!

If your belt displays any of these warning signs of failure, you should replace them immediately.

Poly-V® Belts



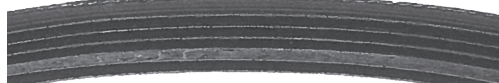
Protruding Edge Cords



Chunking



Foreign Object Damage



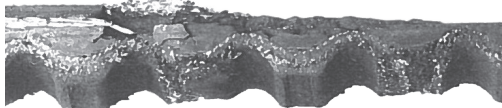
Missing Rib

Rib cracks at the rate of one crack per rib per inch of belt indicate the end of normal belt life.

V-Belts



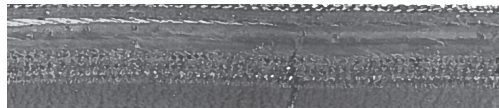
Protruding Edge Cords



Signs of Wear



Glazed Sidewalls



Cracks

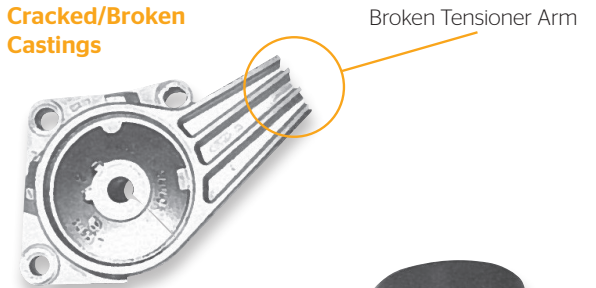
When your belt is replaced, have your tensioner inspected, too - so you can get the most out of your belt drive system.

What are automatic belt tensioners?

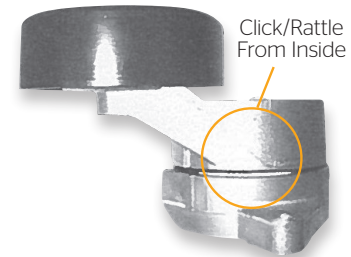
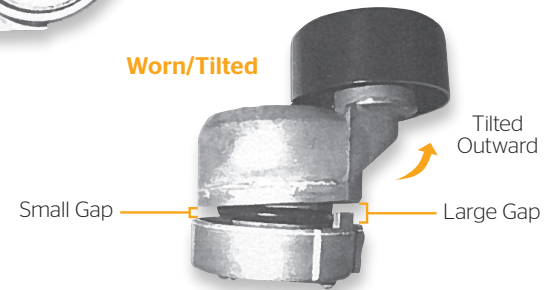
Automatic tensioners allow your belt drive to reach its fullest potential. The right amount of belt tension is a key element in the operation of a belt drive system, and automatic tensioners ensure the belt stays at a constant tension. Plus, you will achieve maximum belt life.

Tensioner-related problems

Cracked/Broken Castings



Worn/Tilted



Noisy Tensioner