

Continental Elite® Stretch Belt

with **Self Tensioning** Technology

The Belt Revolution

Since 2004, automobile manufacturers have been designing drives using self tensioning belts. These drives do not have a mechanical tensioner to maintain constant belt tension, and they do not have an adjustment slot that allows belt installation and tensioning. The Continental Elite® Stretch Belt incorporates low modulus and high elongation technologies that allow the belt to be installed on these fixed drive systems and provide the “self tensioning” capabilities necessary to maintain proper belt tension in the absence of an automatic tensioner.

Although the Elite® Stretch Belt looks like a standard Elite Poly-V®, it is dramatically different. Elite® Stretch Belts are not interchangeable with any Elite® Poly-V® or other V-ribbed serpentine belts. Standard Poly-V® belts should not be used on a drive designed for an Elite® Stretch Belt and, conversely, Elite® Stretch Belts should not be used on drives that incorporate an automatic tensioner.

How do our Elite® Stretch Belts work?

Elite® Stretch Belts are uniquely designed with the latest OEM technology in EPDM compounds and a nylon tensile cord. The cord is designed to elongate and stretch for installation, but recovers to maintain proper tension. Elite® Stretch Belts are slightly shorter than fit length, so that when installed, they automatically tension and maintain that tension over the life of the belt.

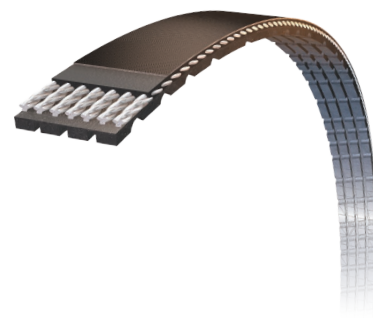
How are Elite® Stretch Belts distinguished?

The Elite® Stretch Belt can be differentiated by its part number. The functional Poly-V® part number that includes the number of ribs and length also has an “S” suffix, indicating Elite® Stretch Belt.

Example: 4030195S

Poly-V® | 3 Ribs | 19.5" | Long

Elite® Stretch Belt



New Belt Profile

Built with our
Quiet Channel Technology™



Installation Guidelines

Know your original equipment

Installation of the Elite® Stretch Belt is unique and depends on the OE application. Installation instructions are printed on the inside of each belt sleeve. In addition, belt installation instructions can be found in the Resource Center at continental-elite.com.

Always follow the general guidelines provided with the belt, or the OE installation procedures provided by the auto manufacturer. When required, use installation tool 08005 or the OE installation tool.

Note: Never use a screwdriver to pry on the belt. Improper belt installation can damage the belt.

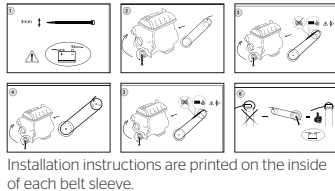
Installation Procedures

Know your installation tools

Proper Elite® Stretch Belt installation may or may not require the installation tool 08005. In some cases, a zip lock tie is all that is required.

Installation tool not required (use a zip lock tie)

1. Belt service should be performed by a professional technician with an appropriate level of skill and competence.
2. Disconnect battery.
3. Cut to remove Elite® Stretch Belt. OE manufacturers do not recommend reusing a belt once removed from the drive.
4. Place Elite® Stretch Belt on accessory pulley.
5. Zip tie the belt onto the pulley to lock it in place in the groove of the pulley.
6. Route belt onto crankshaft, engaging the belt partially into the groove of the pulley.
7. Manually rotate the crankshaft about a half turn to engage the belt.
8. Inspect to make sure belt is now properly seated in all the grooves of both accessory pulley and crankshaft pulley.
9. Remove zip tie.
10. Belt will not need any additional tensioning.
11. Reconnect battery.



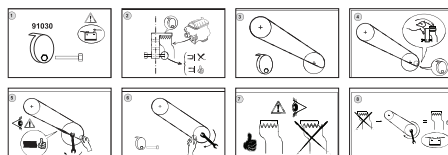
Installation instructions are printed on the inside of each belt sleeve.

Installation tool 08005 required

1. Belt service should be performed by a professional technician with an appropriate level of skill and competence.
2. Disconnect battery.
3. Cut to remove Stretch Belt. In some cases, the main drive belt will also need removal. Follow manufacturer's guidelines for removing and then reinstalling this belt.
4. Place Stretch Belt on the accessory pulley.
5. Install 08005 installation tool as shown on belt sleeve diagram. Typically, the tool is installed on the crankshaft pulley with the flange of the tool overhanging the pulley groove.
6. Manually rotate crankshaft, pulling belt into pulley groove.
7. Inspect to make sure belt is now properly seated in all the grooves of both accessory pulley and crankshaft pulley.
8. Remove installation tool 08005.
9. Reinstall main drive belt.
10. Reconnect battery.



Installation Tool (08005)



Installation instructions are printed on the inside of each belt sleeve.

Application Coverage

Make	Year	Stretch Belt Product #	Installation Tool Required?
Ford Escape, Fusion Lincoln Zephyr Mazda 6, Tribute Mercury Mariner, Milan	2009-06 2006 2008-06 2009-06	4030195S	No
Ford Escape, Fusion Mercury Mariner, Milan	2012-09 2011-09	4030214S	No
Ford Escape, Taurus Mazda MPV, Tribute Mercury Mariner	2006-01 2006-02 2008-05	4030250S	No
Subaru Forester, Impreza	2012-08	4040317S	Yes (Use OEM Tool)
BMW 550i BMW 650i	2010-06 2010-06	4040325S	No
Ford Edge, Fusion Lincoln MKX, MKZ Mazda 6, CX-9	2012-07 2012-07 2012-07	4040352S	08005
Cadillac Escalade Chevrolet Avalanche, Colorado, Express, Silverado, Suburban, Tahoe GMC Canyon, Savana, Sierra, Yukon Hummer H2, H3, H3T	2012-09 2012-09 2012-09 2010-08	4040355S	08005
Ford Flex, Taurus X Lincoln MKT Mazda CX-9 Mercury Sable	2009-08 2012-10 2010-08 2008	4040356S	08005
Ford Flex, Taurus Lincoln MKS Mercury Sable	2012-09 2012-09 2009	4040357S	08005
Chrysler Sebring Dodge Avenger	2010-07 2010-08	4040362S	No
Chevrolet Camaro	2012-10	4040373S	08005
Dodge Nitro Ford Edge Lincoln MKX	2009-07 2012-11 2012-11	4040374S	No
Mazda 3, 5, MX-5 Miata	2012-04	4050264S	08005
Mazda 3, 5, MX-5 Miata	2010-04	4050272S	08005
Ford Fiesta	2014-11	4060408S	08005

Remember: Each application is different, so follow these general guidelines or follow the OE manufacturer's guidelines for proper Elite® Stretch Belt installation. Installation instructions are also located on the inside of the Elite® Stretch Belt sleeve. As with all V-ribbed belts, proper installation is critical for maximum belt life and adequate drive efficiencies.



Legal Notice

The content of this publication is not legally binding and is provided as information only. The trademarks displayed in this publication are the property of Continental AG and/or its affiliates. Copyright © 2014 ContiTech AG. All rights reserved.

Contact

ContiTech North America
Veyance Technologies, Inc.
703 S. Cleveland Massillon Road
Fairlawn, OH 44333-3023 U.S.A.

U.S.A. and Canada

1-800-869-0435
FAX 1-800-228-3148

Canada

(French only)
1-888-275-4397
FAX 1-888-464-4397

Mexico

(Within Mexico)
01-800-439-7373

(Outside Mexico)
+52-444-834-5803

