

15k Two-Post Lift

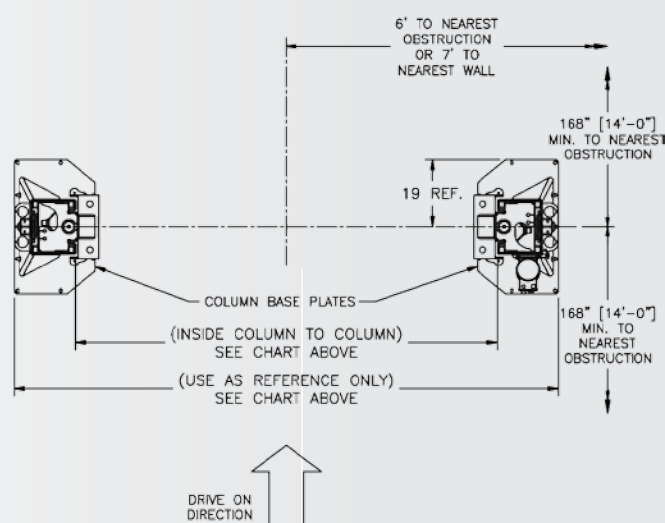
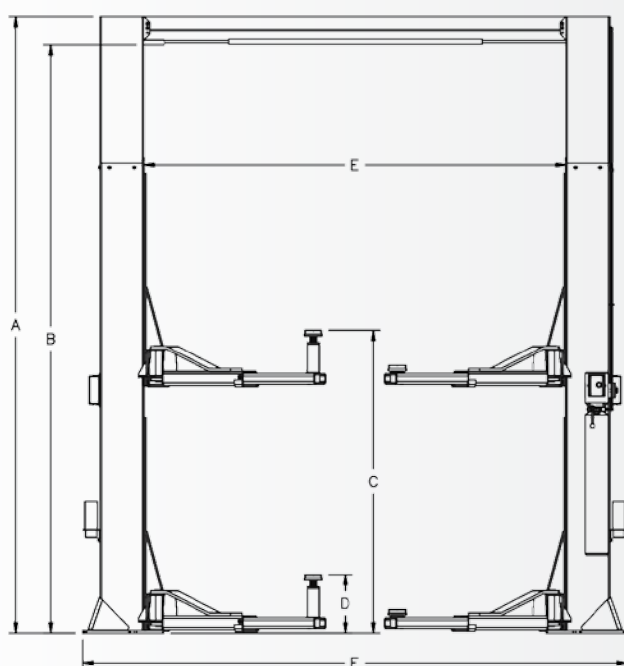
AUTOMOTIVE TWO-POST LIFT SYSTEMS

15k Two-Post Lift Specifications

(EELR739A/EELR740A)

	EELR739A	EELR740A
Capacity:	15,000 lbs (6803kg)	15,000 lbs (6803kg)
Rise height* (C):	85.5" (217.2cm)	85.5" (217.2cm)
Overall height - adjustable (A):	174" (442cm)	198" (502.9cm)
Overall width (F):	154.75" (393.1cm)	154.75" (393.1cm)
Drive thru width:	104.25" (264.8cm)	104.25" (264.8cm)
Floor to overhead shut off (B):	167" (424.2cm)	191" (485.1cm)
Front and Rear arm reach:	38.5" - 62" (97.8 - 157.5cm)	38.5" - 62" (97.8 - 157.5cm)
Screw pad height (D):	6.625" to 8.5" (16.8 - 21.6cm)	6.625" to 8.5" (16.8 - 21.6cm)
Inside column width (E):	119.875" (304.5cm)	119.875" (304.5cm)
Ceiling height requirement:	176" (447cm)	200" (508cm)
Rise time:	60 seconds	60 seconds
Power requirements**:	208-230V 1Ph 60Hz	208-230V 1Ph 60Hz
Max load per arm:	3750 lbs (1701kg)	3750 lbs (1701kg)

*Rise height is measured with high extension **Optional three phase electrical also available, specify at time of order



Hofmann is committed to product innovation and improvement. Therefore, specifications listed in this brochure may change without notice. ©2014 Snap-on Incorporated. Hofmann is a registered trademark of Snap-on Equipment GmbH. All Rights Reserved. All other marks are marks of their respective holders. 07/14 SS143422

Hofmann USA

309 Exchange Avenue
Conway, AR 72032
800.362.4618
Int: 501.505.2739
www.hofmann-usa.com

Hofmann Canada

6500 Millcreek Dr
Mississauga ON L5N 2W6
800.362.4608
www.hofmann.ca

HOFMANN®

