

GIVES YOUR TIRE SHOP A NEW DIMENSION

BENEFITS OF HAVING A WHEEL WASHER

- More profits
- Competitive advantage by offering a complete service
- Customer retention
- Higher customer satisfaction
- More precise wheel balancing
- Cleaner work area
- Environmentally friendly



AUTOMATIC WHEEL WASHER

DELUXE AUTOMATIC WHEEL WASHER | P.46

DOLLY FOR WHEEL WASHER | P.48

CART FOR CARRYING WHEELS TO WHEEL WASHER | P.48



DELUXE AUTOMATIC WHEEL WASHER

PRODUCT NUMBER: MWW-650



SPECIFICATIONS

DIMENSIONS (L x W x H)	43 3/4" X 39 1/4" X 56 1/2" 1109 X 935 X 1435 mm
TIRE WIDTH (MIN-MAX)	5 1/4" to 12 3/4" 135 mm to 325 mm
TIRE DIAMETER (MIN-MAX)	22" to 33-1/2" 560 mm to 800 mm
MAX. TIRE WEIGHT	77 lb. / 35 kg
WEIGHT	396 lb. / 180 kg
COLOUR	Charcoal
ELECTRICAL	208-240 Volts, 3 Ph., 30 Amps
TIRE DIAMETER	33"

DESCRIPTION MWW-650

The deluxe wheel washer is ideal if you have high demand but little space. Suitable for all wheels, this compact machine can be placed anywhere in the shop since it works with a closed water system. The deluxe wheel washer has internal movable side supports for better and faster cleaning. The MWW-650 has 4 different washing programs which are 30, 60, 90 and 120 seconds. It is as easy to install and requires only plastic beads and water.



Control pannel



Drain hose for the water



Motor and electric system



Inside the MWW-650: system to wash your wheels

DELUXE AUTOMATIC WHEEL WASHER

PRODUCT NUMBER: MWW-650

OPERATION COST

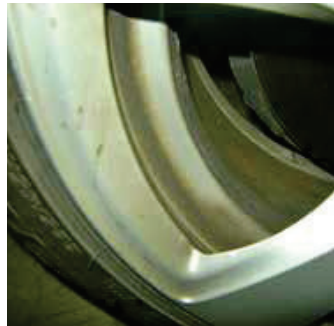
Description	Units	Quantity per wash	Price per Unit	Total
Water per wash	Liter	1	0,0003959 \$	0,0003959 \$
Electricity per wash	KWH	0,1	0,068350 \$	0,0068350 \$
Plastic Beads	Units	1	0,12 \$	0,12 \$
Compressed Air	KWH	0,02	0,068350 \$	0,0013670 \$
Labour	\$ / Hour	0,03	15,00 \$	0,51 \$
Benefits on Labour	\$ / Hour	0,03	1,80 \$	0,082 \$
				Total : 0,72 \$

REVENUES

Cars per day	Cost per wheel	Revenues per wheel	Profits per wheel	Profit per day	Annual Profit
12	0,72 \$	5,00 \$	4,28 \$	205,44 \$	53 414,40 \$
10	0,72 \$	5,00 \$	4,28 \$	171,20 \$	44 512,00 \$
7	0,72 \$	5,00 \$	4,28 \$	119,84 \$	31 158,40 \$
5	0,72 \$	5,00 \$	4,28 \$	85,60 \$	22 256,00 \$
3	0,72 \$	5,00 \$	4,28 \$	51,36 \$	13 353,60 \$



Basket to collect the plastic beads



Before



2 types of plastic beads Blue: Dislodge dirt White: Act like a sponge



After

DOLLY FOR WHEEL WASHER

PRODUCT NUMBER: MWW-650-D



SPECIFICATIONS

DIMENSIONS (L x W x H)	42-1/2" X 37-1/2" X 6-3/16" 1080 X 953 X 157 mm
WEIGHT	90 lb. / 41 kg
COLOUR	Black



DESCRIPTION MWW-650-D

This wheel washer dolly is used to move the wheel washer (MWW-650). It makes it easy to move the machine to the drain when emptying the water of wheel washer. The dolly makes the job easier for your employees when it comes to move the wheel washer. Fast and easy steps are required to use the dolly correctly; simply put the wheel washer on the dolly with the brakes locked, then fill the machine with water and when the time comes to empty the water just unlock the brakes and roll the machine to the drain. This dolly is built with steel and finished with a powder-coated paint and equipped with two swivel wheels of 4" and two fix wheels of 4". The dolly is also equipped with two heavy-duty floor locks.

CART FOR CARRYING WHEELS TO WHEEL WASHER

PRODUCT NUMBER: MWW-650-C



SPECIFICATIONS

DIMENSIONS (L x W x H)	51" X 20" X 41" 1296 X 508 X 1042 mm
TIRE CAPACITY	4
LOAD CAPACITY	300 lb. / 136 kg
WEIGHT	81 lb. / 37 kg
COLOUR	Black



DESCRIPTION MWW-650-C

This wheel washer cart to carry tires to the wheel washer is made to transport more easily and more efficiently the tires to the wheel washer. It also helps to minimize the risks of injuries when carrying the wheels. The dolly makes the job easier for your employees when it comes to move the wheels. The MWW-650-C cart is adjustable. When your wheel washer is fixed to a wheel washer dolly MWW-650-D you only need to adjust the bar to the highest position. If your wheel washer is not equipped with the wheel washer dolly simply adjust the bar to the lowest level. This facilitates the handling of the tires into the wheel washer.